

NBS 102 for CNC Sharpening of Band Saw Blades

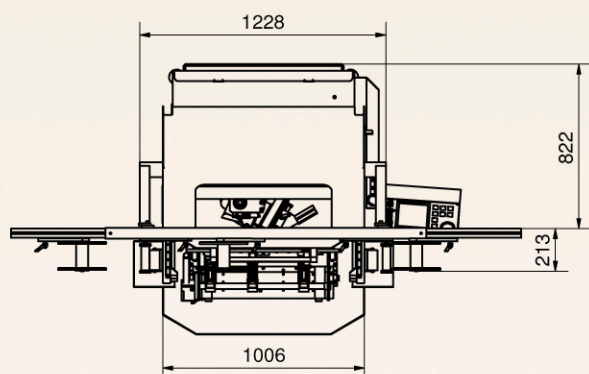
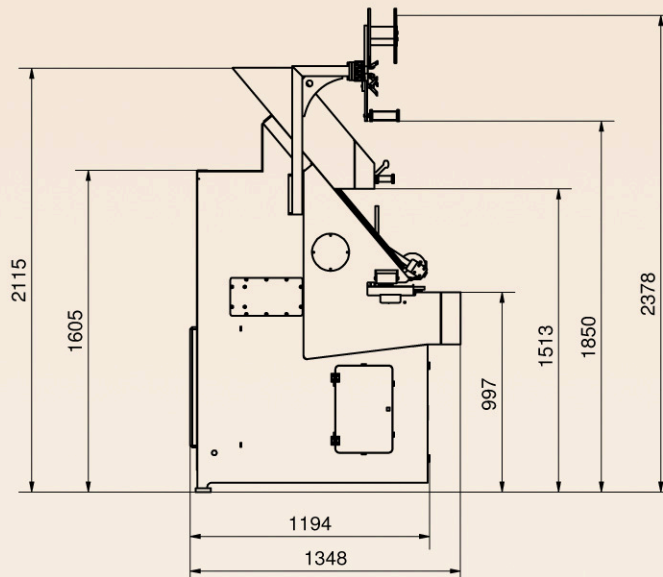
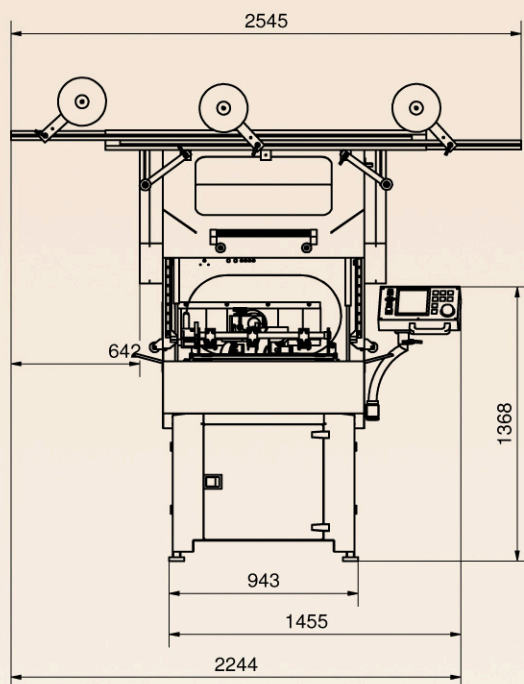
The next generation of CNC sharpening machines, the NBS 102 brings the joy of sharpening process - higher quality sharpening results, operator safety and remote access support via internet - backup programs; software updates; via PC or smart phone access to machine display; remote service support; integration into the production process and gathering technological data, etc.

The machine is ideal for the sharpening of stellite, CV, bimetal and carbide-tipped saw blades up to 100 mm wide. It operates with ceramic, CBN or diamond grinding wheels using water cooling. Driven diamond dressing wheel with automatic cycle is installed as a standard equipment in order to keep the shape of ceramic stone clean and consistent. Thanks to this, the stable and consistent tooth shape of the sharpened blade is ensured.

The grinding cycle is controlled via CNC servo motors; with the result that the saw tooth dynamics remain consistent. NBS 102 incorporates a coolant reservoir and spray system which helps to keep the saw blades cool during grinding.



NBS 102 for CNC Sharpening of Band Saw Blades



Tooth Designer



Free applications for your NBS machine



Remote Display

Technical specification

| | |
|--|---------------------------------|
| Band saw blades length | 2800 – 7000 mm |
| Band saw blades width | 8 – 100 mm |
| Thickness of body | 0.5 – 3.0 mm |
| Tooth pitch | 3 – 75 mm |
| Tooth depth – max. | 15 mm |
| Face angles | 0° – 30° |
| Back tooth angles | 0° – 20° |
| Working speed | 100 – 5000 mm/min. |
| Grinding wheel max. speed via frequency inverter | 50 m/s |
| Grinding wheel diameter | 250 mm |
| Diameter of the shaft of grinding wheel | 32 mm |
| Breadth of the grinding wheel | 6 – 10 mm |
| Compressed air – min. | 6 bar |
| Compressed air volume | approx. 1 m ³ /shift |

Motor specifications

| | |
|---------------------------------------|----------|
| Spindle motor with frequency inverter | 0.55 kW |
| Servo motor Z | 0.40 kW |
| Servo motor X | 0.40 kW |
| Pump motor | 0.155 kW |
| Dressing wheel motor* | 0.060 kW |

Machine dimensions

| | |
|--------|---------|
| Width | 1393 mm |
| Depth | 1348 mm |
| Height | 2115 mm |
| Weight | 800 kg |